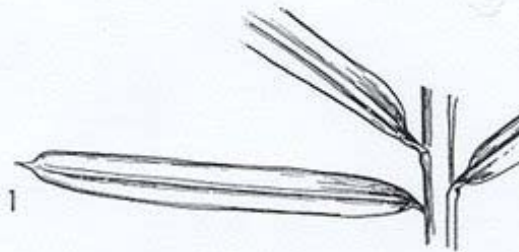
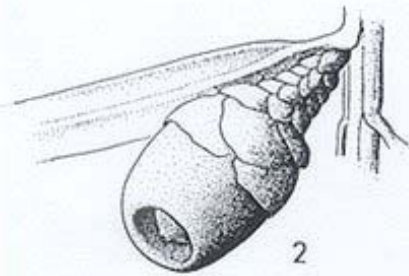


T a b r



TAXACEAE
Taxus brevifolia Nutt.
Tabr

western yew, Pacific yew

FORM: Large, evergreen shrub to small tree, 5-10m (16-30ft) tall with erect or contorted trunk.

IDAHO CHAMPION: 1987. 39in dbh; 112in circum; 44ft tall; 6ft crown=172 pts NezPerce NF, ID.

BARK: Very thin; outer purplish scales covering newly formed reddish inner bark.

LEAVES: Single, alternate, persistent, dark green above, lighter below, linear, petiolate with sharp-pointed apex (1), spirally arranged, appearing 2-ranked.

FRUIT: Fleshy, poisonous, red, berrylike (aril), solitary in leaf axil (2); ripens Aug.-Oct.; seed dispersal Oct.

SIMILAR SPECIES: *Tsuga heterophylla*, p.26, rounded apex.

NOTES: Preferred moose winter browse species. Yew wood was famous for making archery bows.

	Syal h.t.		Ppo
	Phma h.t.		
	Caru	Caru	Pme
	Aruv	h.t.	
	Phma	Phma	
	Smst	h.t.	
1	Phma	Phma	Abgr
	Cooc	h.t.	
1	Libo	Libo	
1	Xete	h.t.	
1	Asca	Asca	
10	Tabr		
7	Mefe		
7	Setr	h.t.	
	Phma		
3	Clun	Clun	
10	Tabr		h.t.
6	Mefe		
2	Xete		
1	Vagl	Xete	Thp1
1	Cooc	h.t.	
2	Clun	Clun	
10	Tabr		
3	Mefe		
4	Xete		
3	Asca	Asca	
10	Tabr		
4	Mefe		
5	Gydr	h.t.	
5	Adpe	h.t.	
4	Adpe	Atfi	Tshe
4	Atfi	h.t.	
5	Opho	h.t.	
2	Clun	Clun	
1	Arnu		
1	Mefe		
2	Xete		
2	Asca	Asca	
3	Arnu		
7	Mefe		
5	Gydr	h.t.	
+	Mefe	Clun	Tsmc
	Xete	h.t.	
1	Xete	Mefe	
	Luhi	h.t.	
	Mefe	Stam	
	Luhi	h.t.	
	Vagl	Xete	Ab1a
	Luhi	h.t.	
	Clun	Clun	
1	Mefe		
1	Xete		
	Cooc	Mefe	
	Xete		
1	Vasc		
1	Luhi		
1	Mefe	Stam	
1	Lica	h.t.	
2	Caca	Caca	
	Vaca		h.t.
	Legl		
1	Cooc	Xete	
	Vagl		h.t.
	Vasc		
	Luhi		
	Vasc	h.t.	Pico
	Xete	c.t.	
	Vaca	c.t.	